

MPL VAS subscription management API

Revision history

Revision	Date	Notes
1	07.08.2023	First draft.

Terms and definitins

- GPA - GP Analytics value-added service
- IdP - identity provider
- JWT - JSON web token
- MPL - (Erste JV) Marketplace

Use cases

Note: data structures in the API operations were designed to support use cases for subscriptions activated at company and at MID level. For that reason the **data** elements are frequently designed to carry an array of items. For services activated at company level, the array will always carry or provide at most one item. For services activated at MID level, the array will carry or provide zero, one or more items.

Display VAS subscription information

Context: merchant is logged in to the web application and navigates to the page for specific VAS (e.g. GPA).

Display VAS subscription information



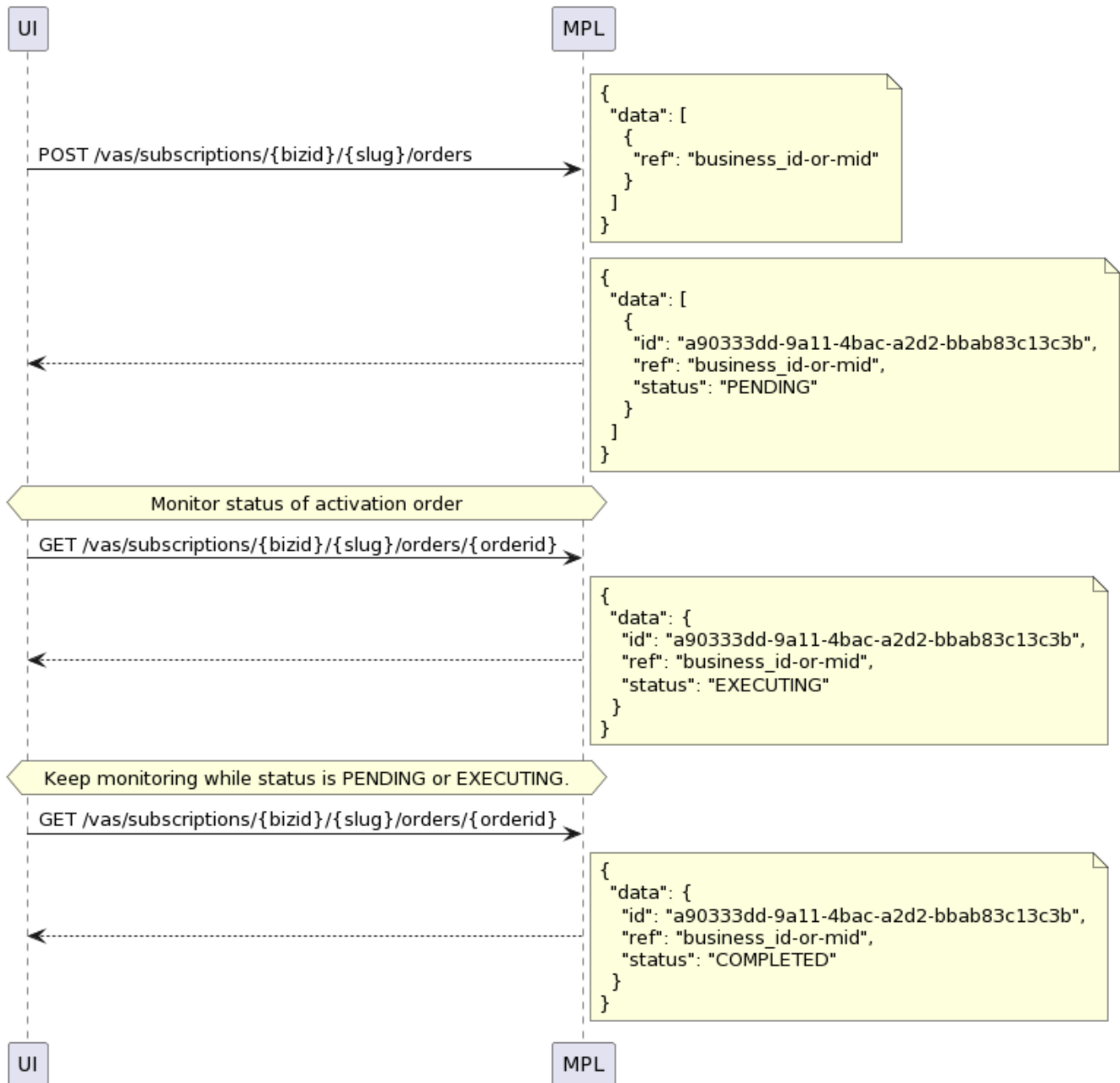
Note: the **data** list will be populated only when there are some (at least one) active service subscription(s). An empty **data** list indicates that there aren't any active subscriptions. For services activated at company level, at most one item will be reported. For services activated at MID level, an item will be reported for every MID that has the service activated.

Request VAS activation

Context: merchant is logged in to the web application and has navigated to the page for specific VAS (e.g. GPA). Merchant does not have active subscription for VAS and can submit request for activation (e.g. by clicking on a button).

Note: VAS subscription activation is a - potentially - long-running process. Once the request for activation was successfully submitted to the MPL server, the UI should monitor the status of the order and limit options available to the user in the UI accordingly.

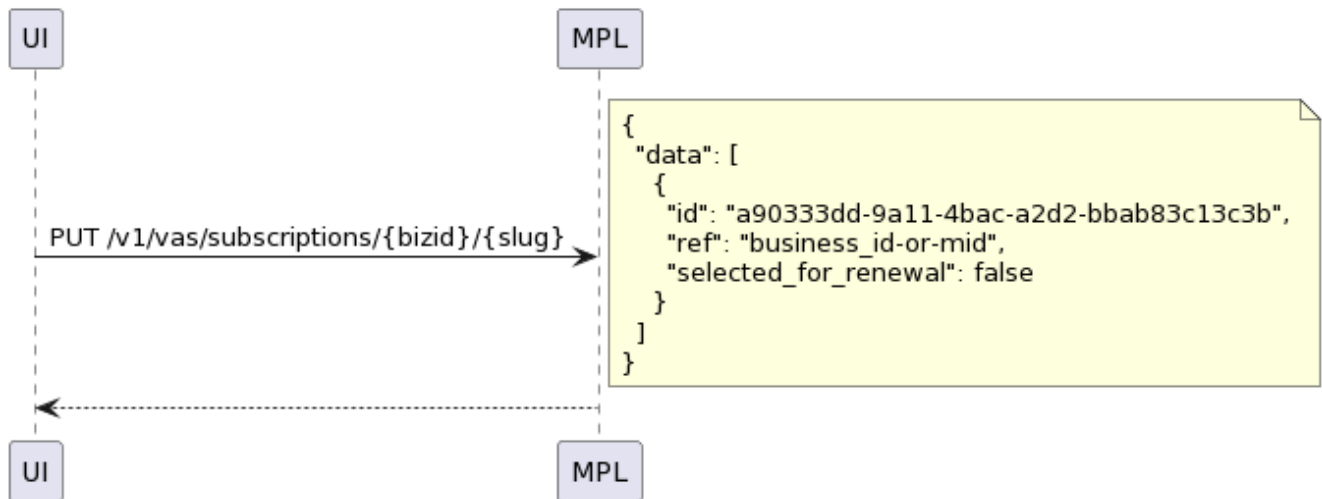
Request VAS subscription activation



Select VAS subscription for deactivation

Context: merchant is logged in to the web application and has navigated to the page for specific VAS (e.g. GPA). Merchant has active subscription for VAS and want's to request its deactivation at the end of the subscription cycle.

Select VAS subscription for deactivation



Select VAS subscription for renewal

Context: merchant is logged in to the web application and has navigated to the page for specific VAS (e.g. GPA). Merchant has active subscription for VAS and has previously requested its deactivation at the end of the current subscription cycle and now wants to reverse this action and keep the subscription.

Select VAS subscription for renewal

